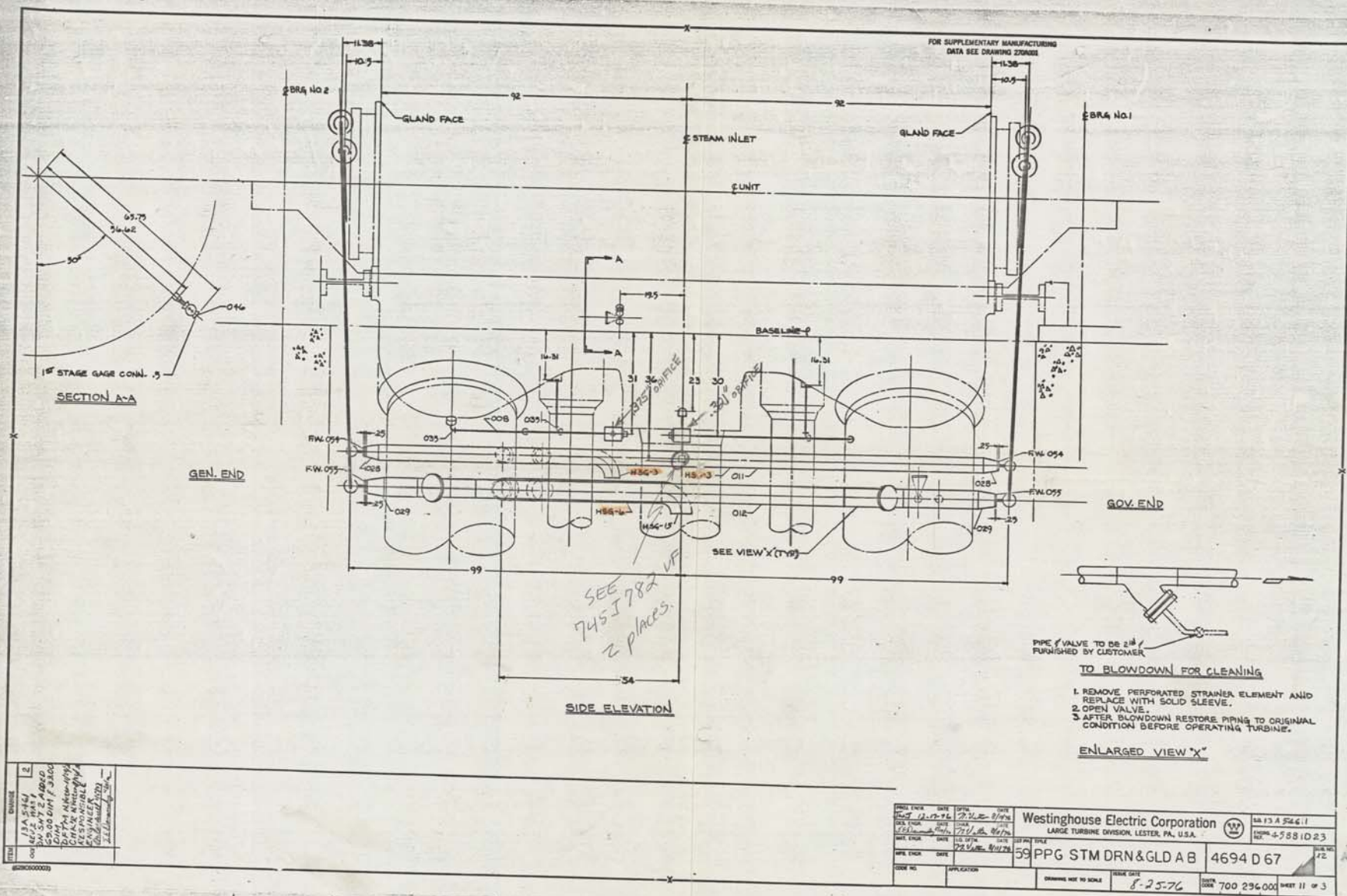


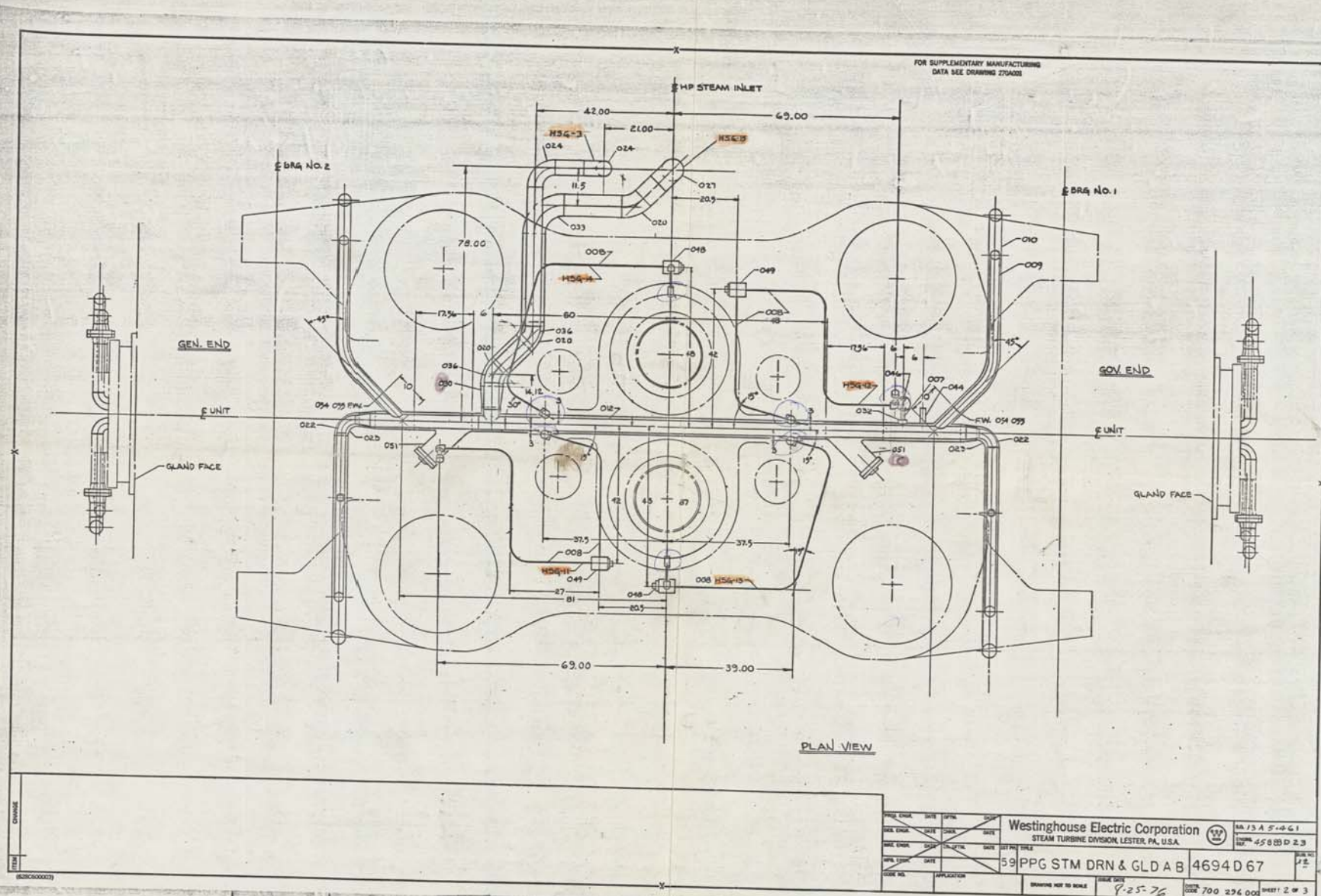
Westinghouse Electric Corporation										PAGE 1	
STEAM DIVISIONS, LESTER, PA., U.S.A.											
1ST PH	TITLE				BM 4694 D67				SUB NO.		
59	PPG-STM DRN & GLD AB				DISTR CODE 700-296-000				12		
ITEM	CHANGE				CHANGE						
001	REV. 2 WAS 1 SEE ASSY DFTM N. Vetter 11/25/74 CHK'R N. Vetter 11/25/76 RESPONSIBLE ENGINEER <u>Delaware 1/5/77</u>								2		
OFFICE COPIES FOR											
LG TURB LG TURB SMALL TURB GAS TURB HT TRANS CHARLOTTE											
DFTM 8/11/74 CHK'R 8/11/76 LG DFTM 7/17/76 DES ENGR 8/11/76 MET ENGR MECH ENGR MFG ENGR											
CODE NO/ APPLICATION LT-10 88-296 ISSUE DATE 12-19-76 JWS											
PAGE LISTING 1 2 3 4											
TOTAL PAGES 4 1ST SO, 13A5461											

Westinghouse Electric Corporation										PAGE 2	
STEAM DIVISIONS, LESTER, PA., U.S.A.											
1ST PH	TITLE				BM 4694 D67				SUB NO.		
59	PPG-STM DRN & GLD AB				DISTR CODE 700-296-000				12		
2ND PH	ITEM	SYM	DESCRIPTION		MATL SPEC	STYLE NO.	REV	QUAN REQ'D			
								G 01 02 03 04			
01	001		PPG STM DRN & GLD AB			4694D67000	2		REF		
01	002		PPG STM DRN & GLD LL			829A460000	-		R		
01	003		DFTG DES NOTES STM PPG			394A923000	1		R		
01	004		ELECTRODES .125 LB		10169AR	398A380000	1		35		
01	005		PIPE			4694D67005	1		1		
			30.00 .375 .126 LDT 10107BM				-		1		
01	007		PIPE			4694D67007	1		1		
			12.00 .50 .147 LDT 10107BM				-		-		
01	008		PIPE			4694D67008	1		1		
			540.00 1.00 .179 LDT 10107BM				-		-		
01	009		PIPE			4694D67009	1		1		
			564.00 2.50 .203 LDT 10107BM				-		-		
01	010		PIPE			4694D67010	1		1		
			620.00 3.00 .216 LDT 10107BM				-		-		
01	011		PIPE			4694D67011	1		1		
			225.00 4.00 .237 LDT 10107BM				-		-		
01	012		PIPE			4694D67012	1		1		
			160.00 5.00 .258 LDT 10107BM				-		-		
01	013		TUBING			4694D67013	1		1		
			220.00 .500 .049 LDT 10108LM				-		-		
01	015		FLANGE-WELD NECK 2.50			626C175020	-		4		
01	016		FLANGE-WELD NECK 3.00			626C175024	-		4		
01	017						-				
01	018						-				

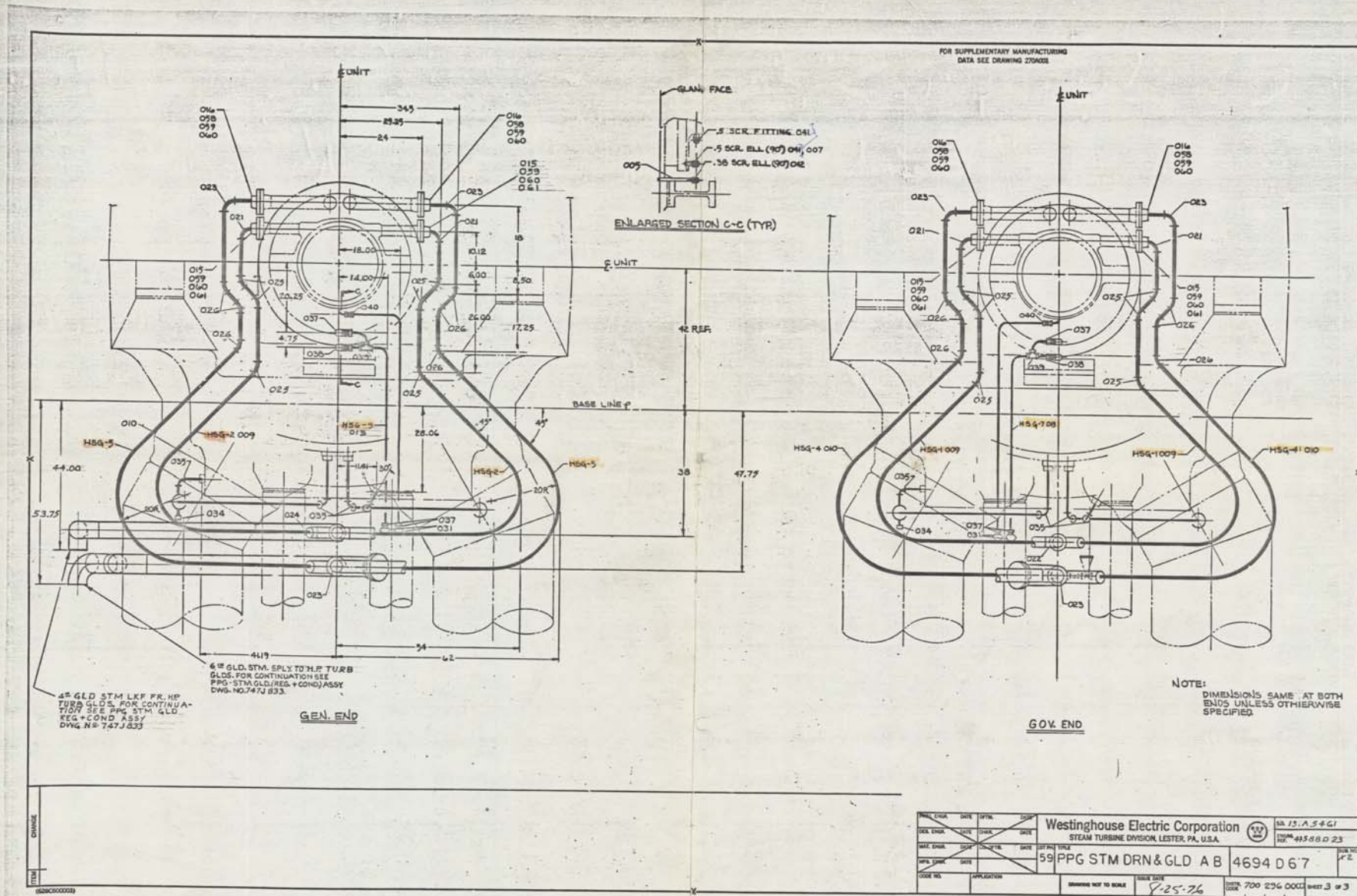
Westinghouse Electric Corporation										PAGE 3	
STEAM DIVISIONS, LESTER, PA., U.S.A.											
1ST PH	TITLE				BM 4694 D67				SUB NO.		
59	PPG-STM DRN & GLD AB				DISTR CODE 700-296-000				12		
2ND PH	ITEM	SYM	DESCRIPTION		MATL SPEC	STYLE NO.	REV	QUAN REQ'D			
								G 01 02 03 04			
01	019		FLANGE ASS'Y 5.00			273A280G34	-	4			
	020		ELBOW BW 45° 6.00			460B051048	-	3			
01	021		ELBOW BW 90° 2.50			460B016020	-	4			
01	022		ELBOW BW 90° 2.50			460B026020	-	2			
01	023		ELBOW BW 90° 3.00			460B026024	-	6			
01	024		ELBOW BW 90° 4.00			460B026032	-	1			
01	025		ELBOW BW 45° 2.50			460B051020	-	12			
01	026		ELBOW BW 45° 3.00			460B051024	-	12			
	027		ELBOW BW 90° 6.00 S.F.			460B016048	-	1			
01	028		REDUCER BW 4.00x2.50			460B066035	-	2			
01	029		REDUCER BW 5.00x3.00			460B066040	-	2			
	030		REDUCER BW 6.00x5.00			460B066048	-	1			
01	031		THREDOLET 2.50x5.00			626C009017	-	4			
01	032		SOCKOLET 5.00x5.00			626C021018	-	1			
	033		ELBOW BW 90° 6.00			460B027048	-	1			
01	034		COUPLING S.W. 1.00			626C095008	-	2			
01	035		ELBOW SW 90° 1.00			626C127008	-	8			
	036		ELBOW BW 45° 4.00			460B051032	-	2			
01	037		FITTING TUBE MALE CONN.			270A337113	-	8			
01	038		FITTING TUBE MALE CONN.			270A337111	-	2			
01	039		FITTING TUBE UNION TEE			270A344101	-	2			
	040		FITTING TUBE ELBOW			270A339113	-	2			
01	041		ELBOW SCRD 90° .500			270A374004	-	1			
01	042		ELBOW SCRD 90° .375			270A374003	-	1			
	043						-				

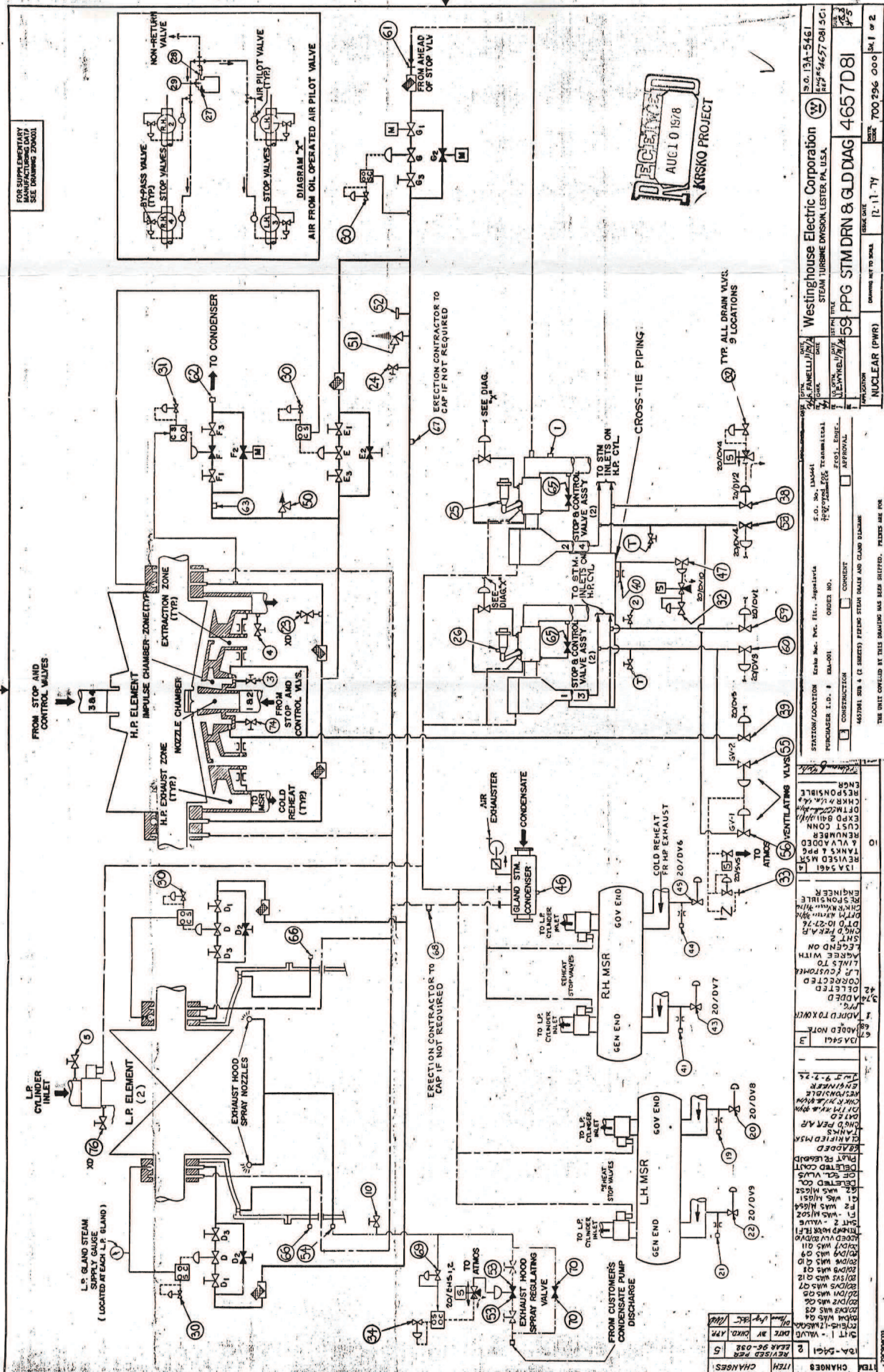
Westinghouse Electric Corporation										PAGE 4	
STEAM DIVISIONS, LESTER, PA., U.S.A.											
1ST PH	TITLE				BM 4694 D67				SUB NO.		
59	PPG-STM DRN & GLD AB				DISTR CODE 700-296-000				12		
2ND PH	ITEM	SYM	DESCRIPTION		MATL SPEC	STYLE NO.	REV	QUAN REQ'D			
								G 01 02 03 04			
01	044		TC WELL APPLICATION			458B758G05	-	2			
	045						-				
01	046		VALVE - GLOBE - SCRD .500			270A391003	-	2			
	047						-				
01	048		ORIFICE BLOCK .32125			650B673G02	-	2			
01	049		ORIFICE BLOCK .375			500C486G04	-	2			
	050						-				
01	051		STEAM STRAINER 5.00			829A022001	-	2			
	052						-				
01	053						-				
01	054		WELD RING 2.50			628C047025	-	4			
01	055		WELD RING 3.00			628C047029	-	4			
	056						-				
01	057						-				
01	058		GASKET 3.00			270A318024	-	8			
01	059		BOLT STUD .625 3.5			627C704014	-	32			
01	060		NUT .625			460B496010	-	64			
01	061		GASKET 2.50			270A318020	-	8			
01	062						-				
01	063						-				
01	064						-				
01	065						-				
01	066						-				
01	067						-				





Appendix D: Picture 4: Turbine Drain and Turbine Gland piping 4





THE UNIT COVERED BY THIS DRAWING HAS BEEN SHIPPED. PRINTS ARE FOR

1	2	3	4	5	6	7	8	9	10	11	12	13	14	15	16	17	18	19	20	21	22	23	24	25	26	27	28	29	30	31	32	33	34	35	36	37	38	39	40	41	42	43	44	45	46	47	48	49	50	51	52	53	54	55	56	57	58	59	60	61	62	63	64	65	66	67	68	69	70	71	72	73	74	75	76	77	78	79	80	81	82	83	84	85	86	87	88	89	90	91	92	93	94	95	96	97	98	99	100
1	2	3	4	5	6	7	8	9	10	11	12	13	14	15	16	17	18	19	20	21	22	23	24	25	26	27	28	29	30	31	32	33	34	35	36	37	38	39	40	41	42	43	44	45	46	47	48	49	50	51	52	53	54	55	56	57	58	59	60	61	62	63	64	65	66	67	68	69	70	71	72	73	74	75	76	77	78	79	80	81	82	83	84	85	86	87	88	89	90	91	92	93	94	95	96	97	98	99	100
1	2	3	4	5	6	7	8	9	10	11	12	13	14	15	16	17	18	19	20	21	22	23	24	25	26	27	28	29	30	31	32	33	34	35	36	37	38	39	40	41	42	43	44	45	46	47	48	49	50	51	52	53	54	55	56	57	58	59	60	61	62	63	64	65	66	67	68	69	70	71	72	73	74	75	76	77	78	79	80	81	82	83	84	85	86	87	88	89	90	91	92	93	94	95	96	97	98	99	100
1	2	3	4	5	6	7	8	9	10	11	12	13	14	15	16	17	18	19	20	21	22	23	24	25	26	27	28	29	30	31	32	33	34	35	36	37	38	39	40	41	42	43	44	45	46	47	48	49	50	51	52	53	54	55	56	57	58	59	60	61	62	63	64	65	66	67	68	69	70	71	72	73	74	75	76	77	78	79	80	81	82	83	84	85	86	87	88	89	90	91	92	93	94	95	96	97	98	99	100
1	2	3	4	5	6	7	8	9	10	11	12	13	14	15	16	17	18	19	20	21	22	23	24	25	26	27	28	29	30	31	32	33	34	35	36	37	38	39	40	41	42	43	44	45	46	47	48	49	50	51	52	53	54	55	56	57	58	59	60	61	62	63	64	65	66	67	68	69	70	71	72	73	74	75	76	77	78	79	80	81	82	83	84	85	86	87	88	89	90	91	92	93	94	95	96	97	98	99	100
1	2	3	4	5	6	7	8	9	10	11	12	13	14	15	16	17	18	19	20	21	22	23	24	25	26	27	28	29	30	31	32	33	34	35	36	37	38	39	40	41	42	43	44	45	46	47	48	49	50	51	52	53	54	55	56	57	58	59	60	61	62	63	64	65	66	67	68	69	70	71	72	73	74	75	76	77	78	79	80	81	82	83	84	85	86	87	88	89	90	91	92	93	94	95	96	97	98	99	100
1	2	3	4	5	6	7	8	9	10	11	12	13	14	15	16	17	18	19	20	21	22	23	24	25	26	27	28	29	30	31	32	33	34	35	36	37	38	39	40	41	42	43	44	45	46	47	48	49	50	51	52	53	54	55	56	57	58	59	60	61	62	63	64	65	66	67	68	69	70	71	72	73	74	75	76	77	78	79	80	81	82	83	84	85	86	87	88	89	90	91	92	93	94	95	96	97	98	99	100
1	2	3	4	5	6	7	8	9	10	11	12	13	14	15	16	17	18	19	20	21	22	23	24	25	26	27	28	29	30	31	32	33	34	35	36	37	38	39	40	41	42	43	44	45	46	47	48	49	50	51	52	53	54	55	56	57	58	59	60	61	62	63	64	65	66	67	68	69	70	71	72	73	74	75	76	77	78	79	80	81	82	83	84	85	86	87	88	89	90	91	92	93	94	95	96	97	98	99	100
1	2	3	4	5	6	7	8	9	10	11	12	13	14	15	16	17	18	19	20	21	22	23	24	25	26	27	28	29	30	31	32	33	34	35	36	37	38	39	40	41	42	43	44	45	46	47	48	49	50	51	52	53	54	55	56	57	58	59	60	61	62	63	64	65	66	67	68	69	70	71	72	73	74	75	76	77	78	79	80	81	82	83	84	85	86	87	88	89	90	91	92	93	94	95	96	97	98	99	100
1	2	3	4	5	6	7	8	9	10	11	12	13	14	15	16	17	18	19	20	21	22	23	24	25	26	27	28	29	30	31	32	33	34	35	36	37	38	39	40	41	42	43	44	45	46	47	48	49	50	51	52	53	54	55	56	57	58	59	60	61	62	63	64	65	66	67	68	69	70	71	72	73	74	75	76	77	78	79	80	81	82	83	84	85	86	87	88	89	90	91	92	93	94	95	96	97	98	99	100
1	2	3	4	5	6	7	8	9	10	11	12	13	14	15	16	17	18	19	20	21	22	23	24	25	26	27	28	29	30	31	32	33	34	35	36	37	38	39	40	41	42	43	44	45	46	47	48	49	50	51	52	53	54	55	56	57	58	59	60	61	62	63	64	65	66	67	68	69	70	71	72	73	74	75	76	77	78	79	80	81	82	83	84	85	86	87	88	89	90	91	92	93	94	95	96	97	98	99	100
1	2	3	4	5	6	7	8	9	10	11	12	13	14	15	16	17	18	19	20	21	22	23	24	25	26	27	28	29	30	31	32	33	34	35	36	37	38	39	40	41	42	43	44	45	46	47	48	49	50	51	52	53	54	55	56	57	58	59	60	61	62	63	64	65	66	67	68	69	70	71	72	73	74	75	76	77	78	79	80	81	82	83	84	85	86	87	88	89	90	91	92	93	94	95	96	97	98	99	100
1	2	3	4	5	6	7	8	9	10	11	12	13	14	15	16	17	18	19	20	21	22	23	24	25	26	27	28	29	30	31	32	33	34	35	36	37	38	39	40	41	42	43	44	45	46	47	48	49	50	51	52	53	54	55	56	57	58	59	60	61	62	63	64	65	66	67	68	69	70	71	72	73	74	75	76	77	78	79	80	81	82	83	84	85	86	87	88	89	90	91	92	93	94	95	96	97	98	99	100
1	2	3	4	5	6	7	8	9	10	11	12	13	14	15	16	17	18	19	20	21	22	23	24	25	26	27	28	29	30	31	32	33	34	35	36	37	38	39	40	41	42	43	44	45	46	47	48	49	50	51	52	53	54	55	56	57	58	59	60	61	62	63	64	65	66	67	68	69	70	71	72	73	74	75	76	77	78	79	80	81	82	83	84	85	86	87	88	89	90	91	92	93	94	95	96	97	98	99	100
1	2	3	4	5	6	7	8	9	10	11	12	13	14	15	16	17	18	19	20	21	22	23	24	25	26	27	28	29	30	31	32	33	34	35	36	37	38	39	40	41	42	43	44	45	46	47	48	49	50	51	52	53	54	55	56	57	58	59	60	61	62	63	64	65	66	67	68	69	70	71	72	73	74	75	76	77	78	79	80	81	82	83	84	85	86	87	88	89	90	91	92	93	94	95	96	97	98	99	100
1	2	3	4	5	6	7	8	9	10	11	12	13	14	15	16	17	18	19	20	21	22	23	24	25	26	27	28	29	30	31	32	33	34	35	36	37	38	39	40	41	42	43	44	45	46	47	48	49	50	51	52	53	54	55	56	57	58	59	60	61	62	63	64	65	66	67	68	69	70	71	72	73	74	75	76	77	78	79	80	81	82	83	84	85	86	87	88	89	90	91	92	93	94	95	96	97	98	99	100
1	2	3	4	5	6	7	8	9	10	11	12	13	14	15	16	17	18	19	20	21	22	23	24	25	26	27	28	29	30	31	32	33	34	35	36	37	38	39	40	41	42	43	44	45	46	47	48	49	50	51	52	53	54	55	56	57	58	59	60	61	62	63	64	65	66	67	68	69	70	71	72	73	74	75	76	77	78	79	80	81	82	83	84	85	86	87	88	89	90	91	92	93	94	95	96	97	98	99	100
1	2	3	4	5	6	7	8	9	10	11	12	13	14	15	16	17	18	19	20	21	22	23	24	25	26	27	28	29	30	31	32	33	34	35	36	37	38	39	40	41	42	43	44	45	46	47	48	49	50	51	52	53	54	55	56	57	58	59	60	61	62	63	64	65	66	67	68	69	70	71	72	73	74	75	76	77	78	79	80																				

NUKLEARNA ELEKT
- v ustanovi
DOKUMEN
O PREJETO

011807